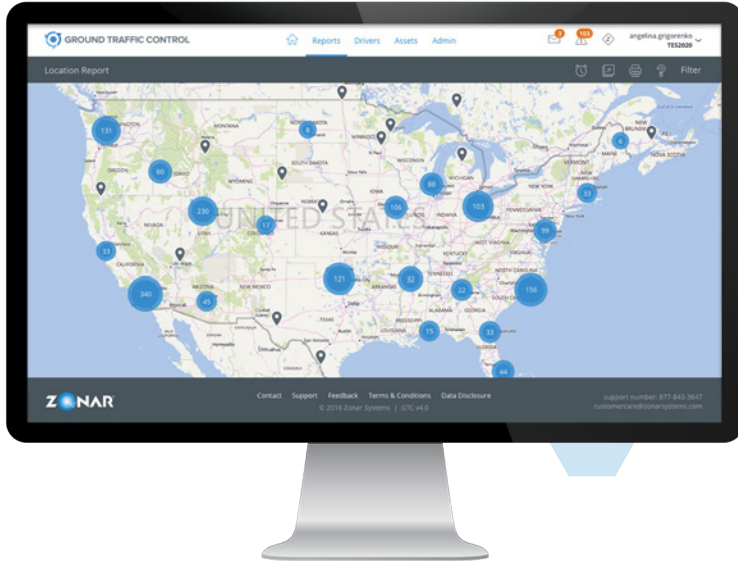




GROUND TRAFFIC CONTROL®

Web-Based Fleet Management



Your Fleet at Your Fingertips

[Ground Traffic Control \(GTC\)](#) provides a real-time picture of all fleet operations with an intuitive look and feel. With an unlimited number of users and 24/7 access from a computer, tablet, or smartphone, GTC is a secure web-based application.

Customized for You

User-friendly dashboards and reporting features make finding data for informed decisions quick and easy. Customize dashboards for each user—whether a fleet manager, mechanic, operations executive, or dispatcher—for easy daily access. Field supervisors can manage assets remotely via our companion app, [GTC FieldView™](#).

Maximize Results with Critical Insights

Your success relies on effective execution of key business objectives. GTC's flexible and customizable reporting filters reveal the metrics that matter most to you. Exception-based reports quickly improve driver performance, asset utilization, communication, compliance and safety. Set your favorites for quick recall, schedule reports to run automatically, and create regular subscriptions for multiple users to ensure everyone has the data they need, when they need it.

Security and Ease-of-Use

Unique user log-ins enable customized permissions so employees only see the information applicable to their role. This secure web-based application allows multiple worksites to access

data from any Internet-enabled device. Staying in touch with those on the move is no longer an obstacle.

Features and Capabilities

- Map every turn of the key, every stop and start, and all activity
- Easily measure driver performance, such as speed, path, safety and idling
- Customize reports, alerts and dashboards for each user's preferences
- Pre-set subscriptions for multiple users to receive reoccurring reports
- Automate tasks that were once a burden on drivers, dispatchers and administrative staff
- Integrate with third-party systems using our open API



For more information, visit zonarsystems.com

zonarsystems.com | 18200 Cascade Ave S., Seattle, WA 98188 | 877-843-3847